

户内 单相 环氧树脂浇注式
INDOOR SINGLE-PHASE EPOXY RESIN CASTING TYPE

技术参数 Technical data

- 产品性能符合标准 GB1208和IEC60044-1
The current transformers are in accordance with GB1208 and IEC60044-1 standards
- 额定绝缘水平 12/42/75kV
Rated insulation level 12/42/75kV
- 额定二次电流: 5A或1A
Rated secondary current 5A or 1A
- 额定频率50Hz或60Hz
Rated frequency 50Hz or 60Hz
- 环境温度: -5℃~+40℃
Ambient temperature -5℃~+40℃



LFZB(J)8-10(W)A2、B2 0.5/5P10型 Type 表1 Table 1

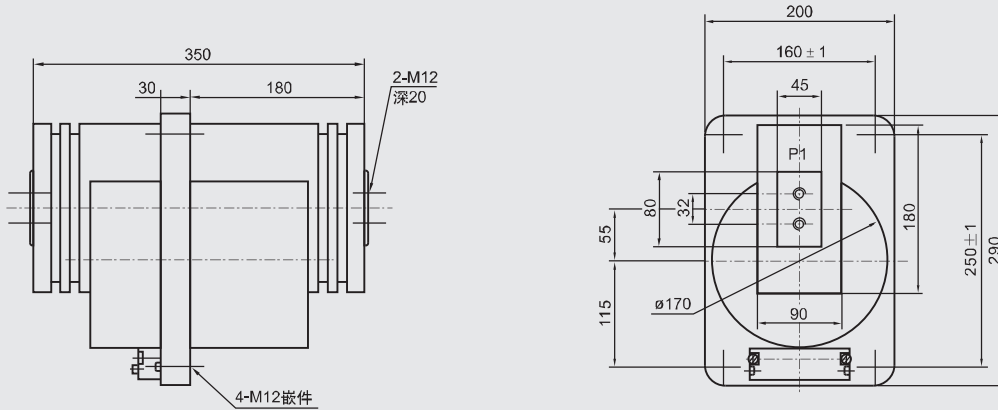
额定一次电流 Rated primary current(A)	准确级组合 Accuracy classes combination	额定二次输出 Rated secondary output(VA)				一秒热稳定电流 1s thermal current(kA)	动稳定电流 Rated dynamic current(kA)
		0.2(S)	0.5(S)	0.5	10P10		
10	0.2(S)/0.2(S) 0.2(S)/0.5(S) 0.5(S)/0.5(S) 0.2(S)/5P10 0.5(S)/5P10	10	10	15	15	1.44	3.6
15						2	5
20、25						3	7.5
30、40						5	12.5
50、60						10	25
75						16	40
100						20	50
150、200						31.5	78
300、400						40	100
500、600						63	150
750、800						80	200
1000						20	100
1200							

LFZB(J)8-10(W)A2、B2 0.5/5P15(20)型 Type 表2 Table 2

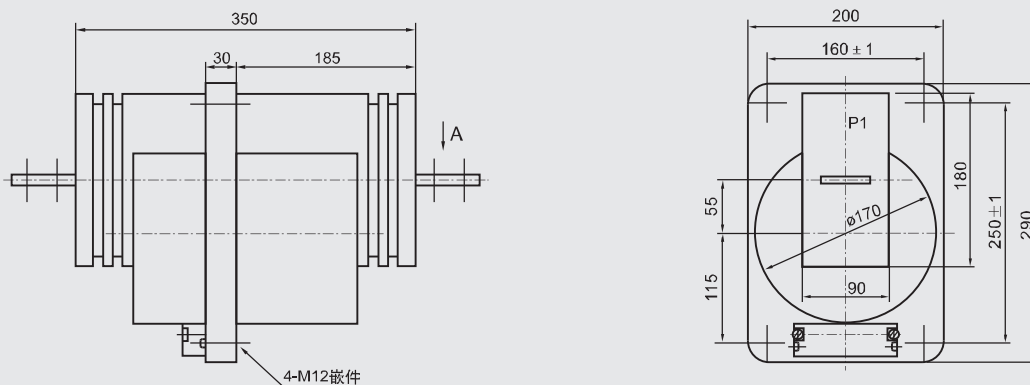
额定一次电流 Rated primary current(A)	准确级组合 Accuracy classes combination	额定二次输出 Rated secondary output(VA)					一秒热稳定电流 1s thermal current(kA)	动稳定电流 Rated dynamic current(kA)
		0.2(S)	0.5S	0.5	5P15	5P20		
10	0.2(S)/5P 0.5(S)/5P	10	10	15	15	10	1.44	3.6
15							1.5	3.75
20							2	5
25、30							3	7.5
40							5	12.5
50							8.1	20.2
75							10	25
100							16	40
150							20	50
200、250							31.5	78
300、400							40	100
500、600							63	150
750、800							80	200
1000							100	250
1200								

外形及安装尺寸 Overall dimension drawing

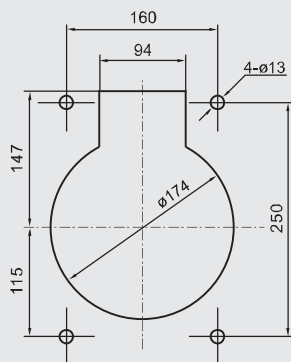
LFZB(J)8-10(W)A2 5-1200A



LFZB(J)8-10(W)B2 5-1200A



开孔尺寸图
Opening size drawing



A向 Direction A

